

100 W **Constant Current** LED driver

Product code: 5799

100 W 220 – 240 V 0 / 50 – 60 Hz

- Very high efficiency up to 95 %
- Low current ripple, complying with IEEE 1798 recommendation
- Suitable for DC use
- Long lifetime up to 100 000 h
- Maximum output voltage limited to 250 V
- Active open load protection
- Improved surge protection up to 4 kV at L-GND
- Driver protection Class I
- Ideal solution for Class I luminaires, suitable for Class II luminaires too*



* See page 4 for details.

Illustrative only, the driver mechanics have been updated from this photo, see connections and dimensions pictures in this datasheet for the latest information..

Functional Description

- Adjustable constant current output: 250 mA (default) to 700 mA
- Additional 350 mA fixed current output.
- Current setting with external resistors

Mains Characteristics

Nominal rated voltage range	220 V – 240 V, 0 / 50 – 60 Hz
AC voltage range	198 VAC – 264 VAC
	Withstands max. 320 VAC (max. 1 hour)
DC voltage range	176 VDC – 280 VDC
DC starting voltage	> 190 VDC
Mains current at full load	0.40 – 0.54 A
Frequency	0 / 50 Hz – 60 Hz
THD at full power	< 7 %
Leakage current to earth	< 0.3 mA
Tested surge protection	1 kV L-N, 4 kV L-GND (IEC 61000-4-5)
Tested fast transient protection	2 kV (IEC 61000-4-4)

Insulation between circuits & driver case

Mains circuit - Output	Non-isolated
Mains and output - Driver case	Basic insulation

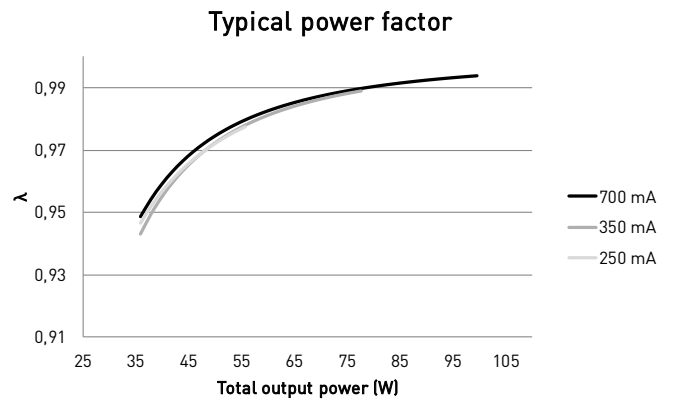
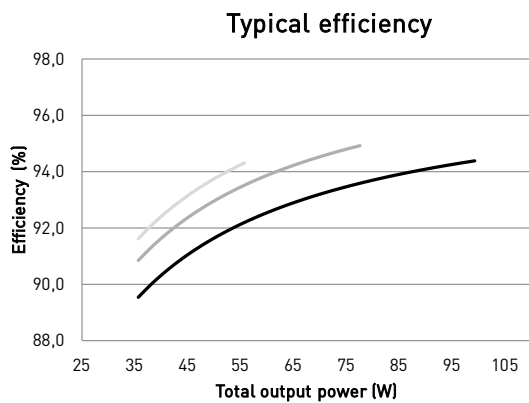
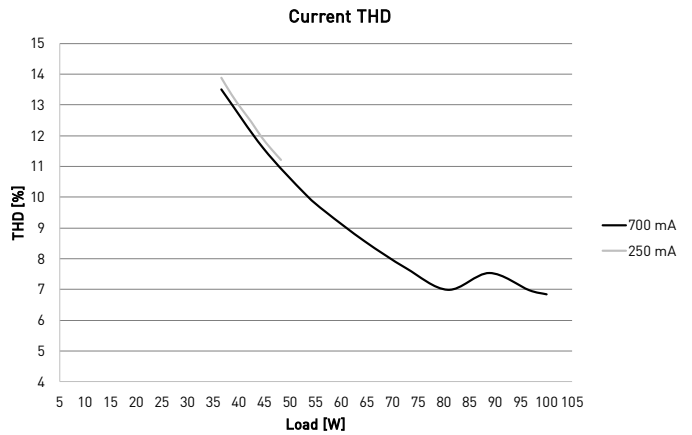
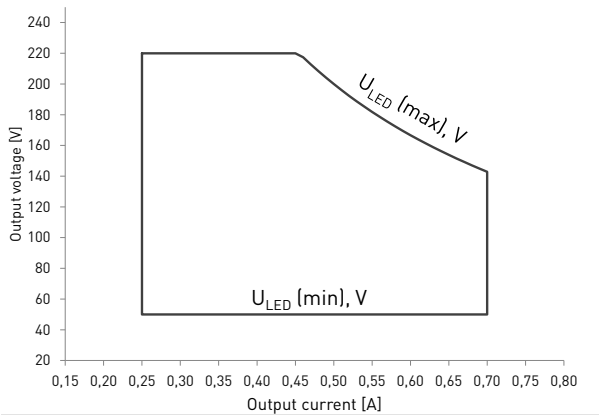
Load Output (non-isolated)

Output current (I_{out})	250 mA (default) – 700 mA
Accuracy	$\pm 5 \%$
Ripple	< 1 % ¹⁾ at ≤ 120 Hz
	1) Low frequency, LED load: Cree MX3 LEDs
PstLM	$\leq 1^{2)}$
SVM	$\leq 0,4^{2)}$
	2) At full power
U_{OUT} (max) (abnormal)	250 V
EOF _I (EL use)	> 0.98 x output current with AC supply

This LED driver does not allow operation with high output capacitance according to IEC 62384 clause 7.3.

I_{LED}	250 mA	350 mA	700 mA
P_{Rated}	12.5...55 W	17.5...77 W	35...100 W
U_{LED}	50 – 220 V	50 – 220 V	50 – 142 V
PF (λ) at full load	0.98	0.98	0.98
Efficiency (η) at full load	94 %	95 %	94 %

Operating window and driver performance



Operating Conditions and Characteristics

Highest allowed tc point temperature	75 °C
t _c life (60 000 h) temperature	75 °C
Ambient temperature range*	-25 °C ... +50 °C*
Storage temperature range	-40 °C ... +80 °C
Maximum relative humidity	No condensation
Mains switching cycles	> 100 000 cycles
Lifetime (90 % survival rate)	100 000 h, at t _c = 65 °C 90 000 h, at t _c = 70 °C 60 000 h, at t _c = 75 °C

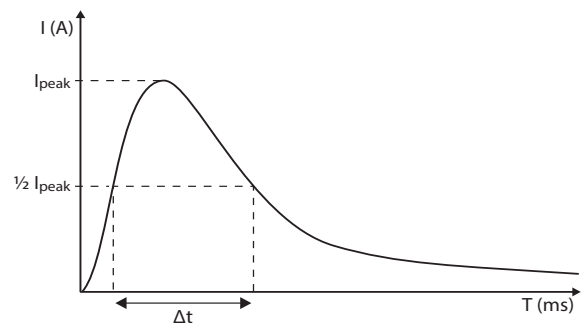
*) For other than independent use, higher t_a of the controlgear possible as long as highest allowed t_c point temperature is not exceeded

Quantity of drivers per miniature circuit breaker 16 A Type C

Based on inrush current I _{peak}	Typ. peak inrush current I _{peak}	1/2 value time, Δt	Calculated energy, I _{peak} ² Δt
40 pcs.	37 A	169 μs	0.173 A ² s

CONVERSION TABLE FOR OTHER TYPES OF MINIATURE CIRCUIT BREAKER

MCB type	Relative quantity of LED drivers
B 10 A	37 %
B 16 A	60 %
B 20 A	75 %
C 10 A	62 %
C 16 A	100 % [see table above]
C 20 A	125 %



CONTINUOUS CURRENT

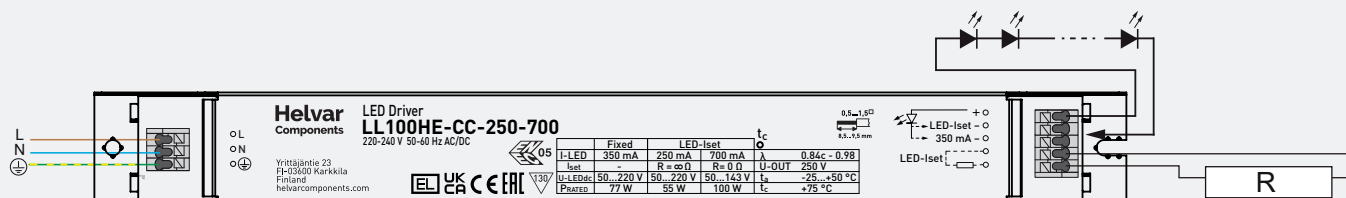
Total continuous current of the drivers and installation environment must always be considered and taken into calculations when installing drivers behind miniature circuit breaker. Example calculation of total drivers amount limited by continuous current: $I_{cont} = (16 A (I_{nom, Ta} / \text{"nominal mains current with full load"}) \times 0.76)$. This calculation is an example according to recommended precautions due to multiple adjacent circuit breakers (> 9 MCBs) and installation environment (T_a 30 degrees); variables may vary according to the use case. Both inrush current and continuous current calculations are based on ABB S200 series circuit breakers. More specific information in ABB series S200 circuit breaker documentation.

NOTE! Type C MCB's are strongly recommended to use with LED lighting. Please see more details in "MCB information" document in each driver product page in "downloads & links" section.

Connections and Mechanical Data

Wire size	0.5 mm ² – 1.5 mm ²
Wire type	Solid core and fine-stranded
Wire insulation	According to EN 60598
Maximum driver to LED wire length	1.5 m
Weight	205 g
IP rating	IP20

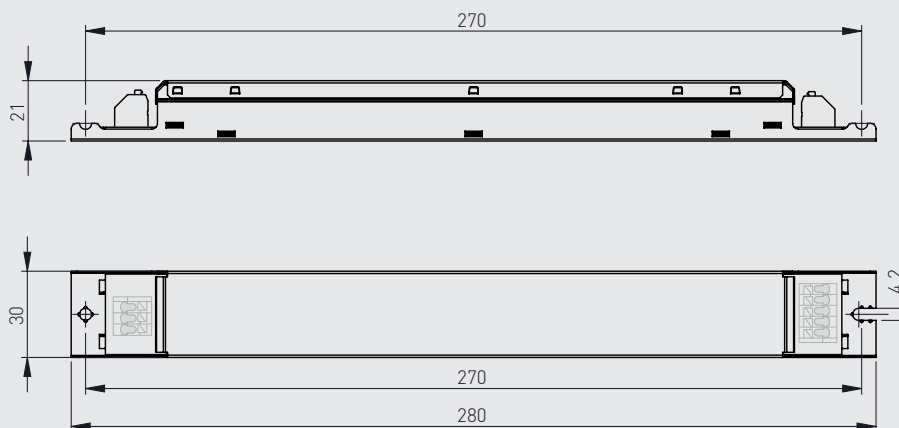
Connections



Note:

- Not suitable for load side switching operation
- Label may differ if the unit is preset to fixed current

Dimensions (mm)



The LED-Iset resistor/current setting values are adjusted according to the LEDset specification. The resistor value for each required output current can thus be calculated from the formula $R [\Omega] = (5 [V] / I_{out} [A]) * 1000$. Below are the available LED-Iset resistors from Helvar Components, pre-adjusted for the most common output currents.

Helvar Components LED-Iset resistors and currents (Nominal I_{out} (±5 % tol.))

LED-Iset resistor model	MAX	650 mA	600 mA	550 mA	500 mA	475 mA	450 mA	425 mA	400 mA	375 mA	350 mA	325 mA	300 mA	275 mA	No resistor
I _{out} (mA)	700	650	600	550	500	475	450	425	400	375	350	325	300	275	250
Order code	T90000	T90650	T90600	T90550	T90500	T90475	T90450	T90425	T90400	T90375	T90350	T90325	T90300	T90275	N/A
Resistance values (Ω)	0	7.68k	8.25k	9.09k	10k	10.5k	11k	11.8k	12.4k	13.3k	14.3k	15.4k	16.5k	18.2k	∞

The current can be adjusted also with normal resistors by selecting suitable resistor value (formula $R [\Omega] = (5 [V] / I_{out} [A]) * 1000$). Reference resistor values can be found below order code in the table above.

LL100HE-CC-250-700 LED driver is suited for built-in usage in luminaires. With LL1x2130-SR strain reliefs, independent use is possible too (see the LL1x2130-SR datasheet for details). In order to have safe and reliable LED driver operation, the LED luminaires will need to comply with the relevant standards and regulations (e.g. IEC/EN 60598-1). The LED luminaire shall be designed to adequately protect the LED driver from dust, moisture and pollution. The luminaire manufacturer is responsible for the correct choice and installation of the LED drivers according to the application and product datasheets. Operating conditions of the LED drivers may never exceed the specifications as per the product datasheet.

Installation & operation

Maximum ambient and t_c temperature:

- For built-in components inside luminaires, the t_a ambient temperature range is a guideline given for the optimum operating environment. However, integrator must always ensure proper thermal management (i.e. mounting base of the driver, air flow etc.) so that the t_c point temperature does not exceed the t_c maximum limit in any circumstance.
- Reliable operation and lifetime is only guaranteed if the maximum t_c point temperature is not exceeded under the conditions of use.

Current setting resistor

LL100HE-CC-250-700 LED driver features a constant current output adjustable via current setting resistor.

- An external resistor can be inserted in to the current setting terminal marked with LED-Iset on the LED driver label., allowing the user to adjust the LED driver output current.
- When no external resistor is connected, then the LED drivers will operate at their default lowest current level.
- A standard through-hole resistor can be used for the current setting. To achieve the most accurate output current it is recommended to select a quality low tolerance resistor. Minimum diameter for resistor leg is 0.51mm.
- For the resistor/current value selection, refer to the table on page 3.
- For drivers not providing isolation (non-isolated), current setting resistor must be insulated according safety regulations.

LED driver earthing

- LL100HE-CC-250-700 LED driver is a protective Class I device and designed for Class I luminaires.
- If used inside **Class I** luminaires, this LED driver must always have the protective earth cable connected for safety reasons.
- The driver is designed to be used inside Class I luminaires. For usage inside **Class II** luminaires, the safety of the luminaire shall be ensured through double/reinforced insulation of live parts and through supplementary insulation of conductive parts of the casing, or any conductive parts connected to the casing, as the casing is only basic insulated from the live parts. The earth connector of the driver shall be left unconnected and there shall be no protective earth terminals in the luminaire terminal block to fulfill the requirements of IEC/EN 60598-1 for Class II luminaires. The EMC performance of the driver change when left unearthed, so it is always the responsibility of the integrator to take measures and necessary actions, for example by luminaire design to ensure the assembled luminaire complies with latest EMC standard.

Miniature Circuit Breakers (MCB)

- Type-C MCB's with trip characteristics in according to EN 60898 are recommended.
- Please see more details in "MCB information" document in each driver product page in "downloads & links" section.

Lamp failure functionality

No load

When open load is detected, driver limits output voltage according to U_{out} (max) (abnormal) and goes into low power consumption stand-by mode. After resolving the fault, the normal driver operation can be resumed through a mains reset (> 2 seconds).

Overload

Driver can withstand overload, however reliable operation is only guaranteed in specified voltage range.

Underload

Reliable operation of the driver is only guaranteed in specified voltage range.

Short circuit

Driver can withstand output short circuit.

Conformity & standards

General and safety requirements	EN 61347-1
Particular safety requirements for DC or AC supplied electronic control gear for LED modules	EN 61347-2-13
Thermal protection class	EN 61347, C5e
Mains current harmonics	EN 61000-3-2
Limits for voltage fluctuations and flicker	EN 61000-3-3
Radio frequency interference	EN 55015
Immunity standard	EN 61547
Performance requirements	EN 62384
Recommended Practices for Modulating Current in High-Brightness LEDs for Mitigating Health Risks to Viewers	IEEE 1789-2015
Compliant with relevant EU directives	
RoHS/REACH compliant	
CE/UKCA and ENEC marked	

Label symbols



Thermally controlled control gear, incorporating means of protection against overheating to prevent the case temperature under any conditions of use from exceeding 130 °C.